



MORGAN AND MORECAMBE OFFSHORE WIND FARMS: TRANSMISSION ASSETS

Environmental Statement

Volume 4, Figures



September 2024
Rev: ES Issue

MOR001-FLO-CON-ENV-FIG-0012
MRCNS-J3303-RPS-10163

PINS Reference: EN020028
APFP Regulations: 5(2)(a)
Document reference: F4.4

Document status					
Version	Purpose of document	Approved by	Date	Approved by	Date
ES	For issue	AS	September 2024	IM	September 2024

The report has been prepared for the exclusive use and benefit of the Applicants and solely for the purpose for which it is provided. Unless otherwise agreed in writing by RPS Group Plc, any of its subsidiaries, or a related entity (collectively 'RPS') no part of this report should be reproduced, distributed or communicated to any third party. RPS does not accept any liability if this report is used for an alternative purpose from which it is intended, nor to any third party in respect of this report. The report does not account for any changes relating to the subject matter of the report, or any legislative or regulatory changes that have occurred since the report was produced and that may affect the report.

The report has been prepared using the information provided to RPS by its client, or others on behalf of its client. To the fullest extent permitted by law, RPS shall not be liable for any loss or damage suffered by the client arising from fraud, misrepresentation, withholding of information material relevant to the report or required by RPS, or other default relating to such information, whether on the client's part or that of the other information sources, unless such fraud, misrepresentation, withholding or such other default is evident to RPS without further enquiry. It is expressly stated that no independent verification of any documents or information supplied by the client or others on behalf of the client has been made. The report shall be used for general information only.

Prepared by:

RPS

Prepared for:

**Morgan Offshore Wind Limited,
Morecambe Offshore Windfarm Ltd**



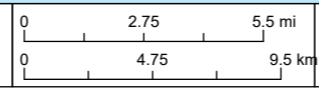
LEGEND

- Transmission Assets
- Order Limits

Path: L:\P:\eur-mpfs-02.eur.rpsgroup.com\Projects\12693_Morgan Morecambe Transmission Assets\Tech\Drawings\12693-0201-03.aprx 12693-0201-03

Project Name:
MORGAN AND MORECAMBE OFFSHORE WIND FARMS: TRANSMISSION ASSETS

Drawing Title:
TRANSMISSION ASSETS ORDER LIMITS



Geodetic Information:
Datum: OSGB 1936
Projection: British National Grid
Scale@379mmx231mm: 1:280,000

Data Sources: Client, The Crown Estate, MMO, NRW, ScotGov, MarineRegions.org

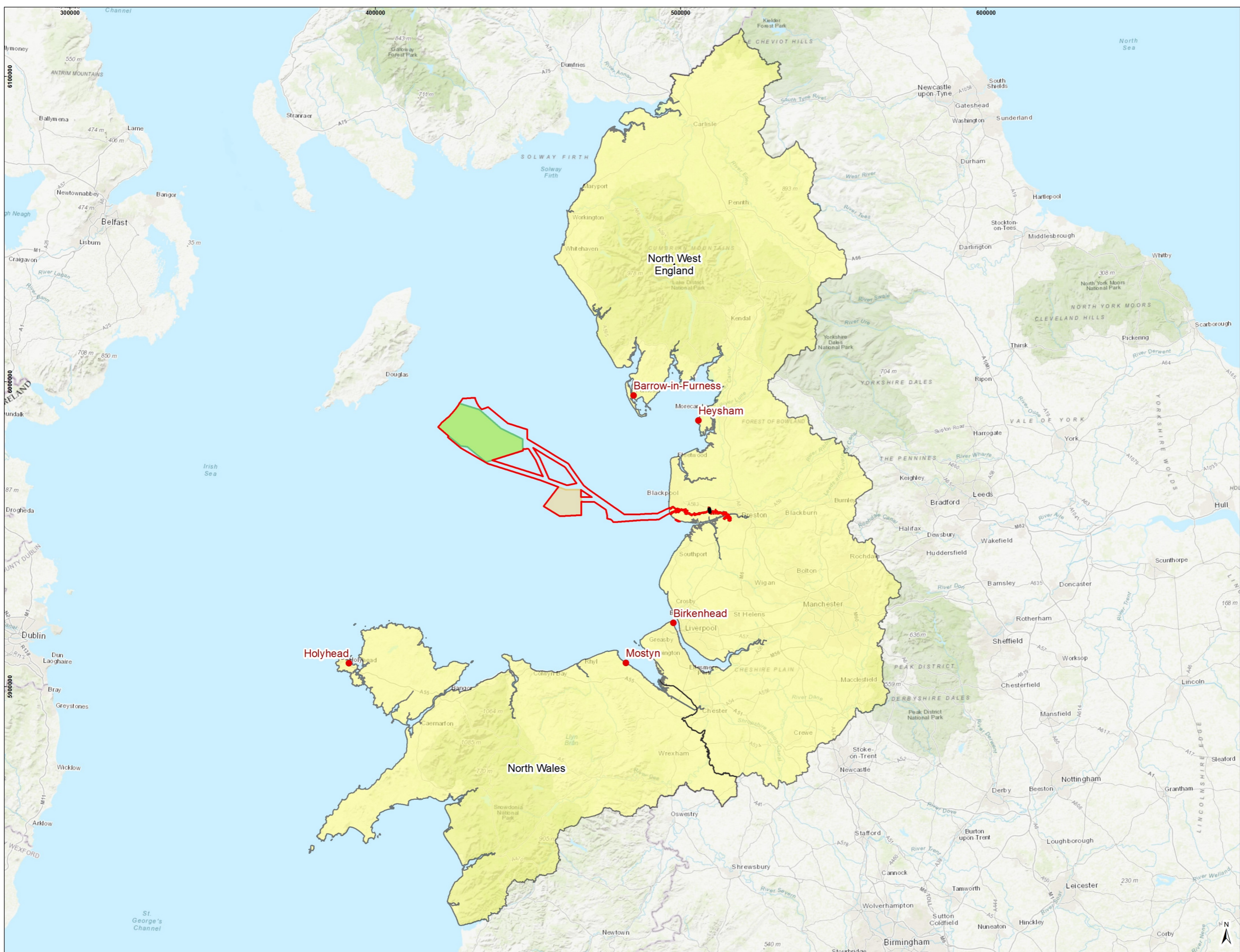
© Crown copyright. All rights reserved. 2024 License number 100031673.
Service layer credits: Esri UK, Esri, TomTom, Garmin, Foursquare, FAO, METI/NASA, USGS, Esri, CGIAR, USGS, Esri UK, Esri, TomTom, Garmin, Foursquare, METI/NASA, USGS



Figure 1.1

Drawing Number:
12693-0201-03

VER	DATE	DETAILS	BY	CHECK
03	23/09/24	FINAL	SHB	AP



- LEGEND**
- Morgan and Morecambe Offshore Windfarm: Transmission Assets Order Limits
 - Morgan Offshore Wind Project: Generation Assets
 - Morecambe Offshore Windfarm: Generation Assets
 - Morgan-Morecambe Transmission Onshore Substations
 - Port
 - Sub-national study area – offshore impacts

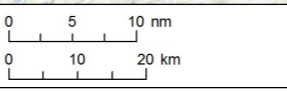


Figure 2.1

Drawing Number:
EOR0823-ES-SOE-E001-04

Project Name:
MORGAN AND MORECAMBE OFFSHORE WIND FARMS: TRANSMISSION ASSETS

Drawing Title:
SOCIO-ECONOMICS SUB-NATIONAL STUDY AREAS FOR THE PROPOSED DEVELOPMENT – OFFSHORE ASSESSMENT

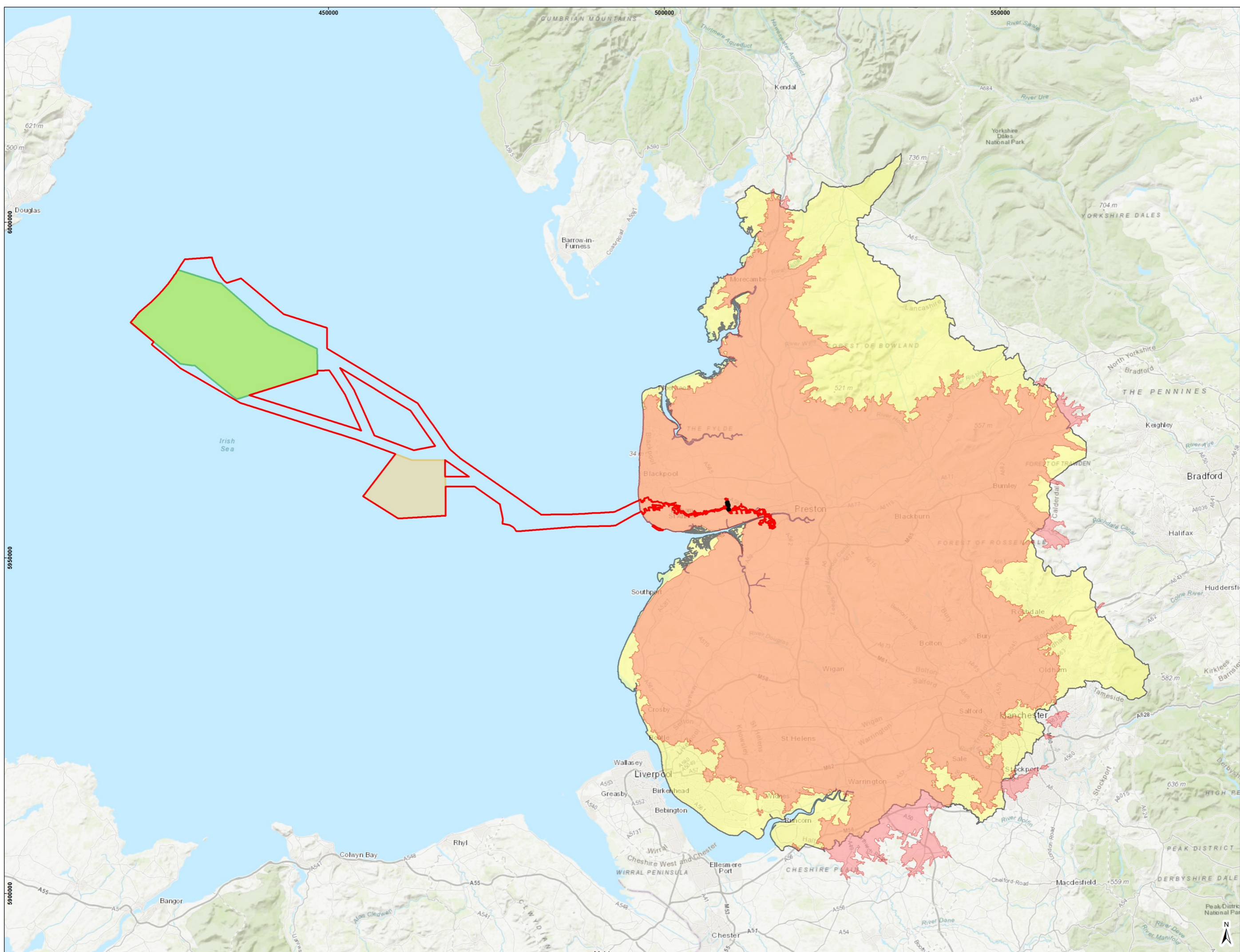


Geodetic Information:
Datum: ETRS 1989
Projection: ETRS 1989 UTM Zone 30N
Scale@379mmx231mm: 1:1,100,000

Data Sources: Client, Contains OS data © Crown copyright and database right 2022.
TravelTime Technologies Ltd, 2022. <https://traveltime.com>.

Service Layer Credits: Sources: Esri, HERE, Garmin, Intermap, increment P Corp., GEBCO, USGS, FAO, NPS, NRCAN, GeoBase, IGN, Kadaster NL, Ordnance Survey, Esri Japan, METI, Esri China (Hong Kong), (c) OpenStreetMap contributors, and the GIS User Community

VER	DATE	DETAILS	BY	CHECK
00	14/02/24	Initial Issue	MJ	KH
04	23/09/24	Final	MJ	BM



- LEGEND**
- Morgan and Morecambe Offshore Windfarms: Transmission Assets Order Limits
 - Morgan Offshore Wind Project: Generation Assets
 - Morecambe Offshore Windfarm: Generation Assets
 - Morgan-Morecambe Transmission Onshore Substations
 - 60-min drive time catchment
 - Sub-national study area – onshore impacts

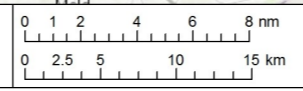


Figure 2.2

Drawing Number:
EOR0823-ES-SOE-E002-04

Project Name:
MORGAN AND MORECAMBE OFFSHORE WIND FARMS: TRANSMISSION ASSETS

Drawing Title:
SOCIO-ECONOMICS SUB-NATIONAL STUDY AREA FOR THE PROPOSED DEVELOPMENT – ONSHORE ASSESSMENT



Geodetic Information:
Datum: ETRS 1989
Projection: ETRS 1989 UTM Zone 30N
Scale@379mmx231mm: 1:500,000

Data Sources: Client, Contains OS data © Crown copyright and database right 2022.
TravelTime Technologies Ltd, 2022. <https://traveltime.com>.

Service Layer Credits: Sources: Esri, HERE, Garmin, Intermap, increment P Corp., GEBCO, USGS, FAO, NPS, NRCAN, GeoBase, IGN, Kadaster NL, Ordnance Survey, Esri Japan, METI, Esri China (Hong Kong), (c) OpenStreetMap contributors, and the GIS User Community

VER	DATE	DETAILS	BY	CHECK
00	14/02/24	Initial Issue	MJ	KH
04	23/09/24	Final	MJ	BM